

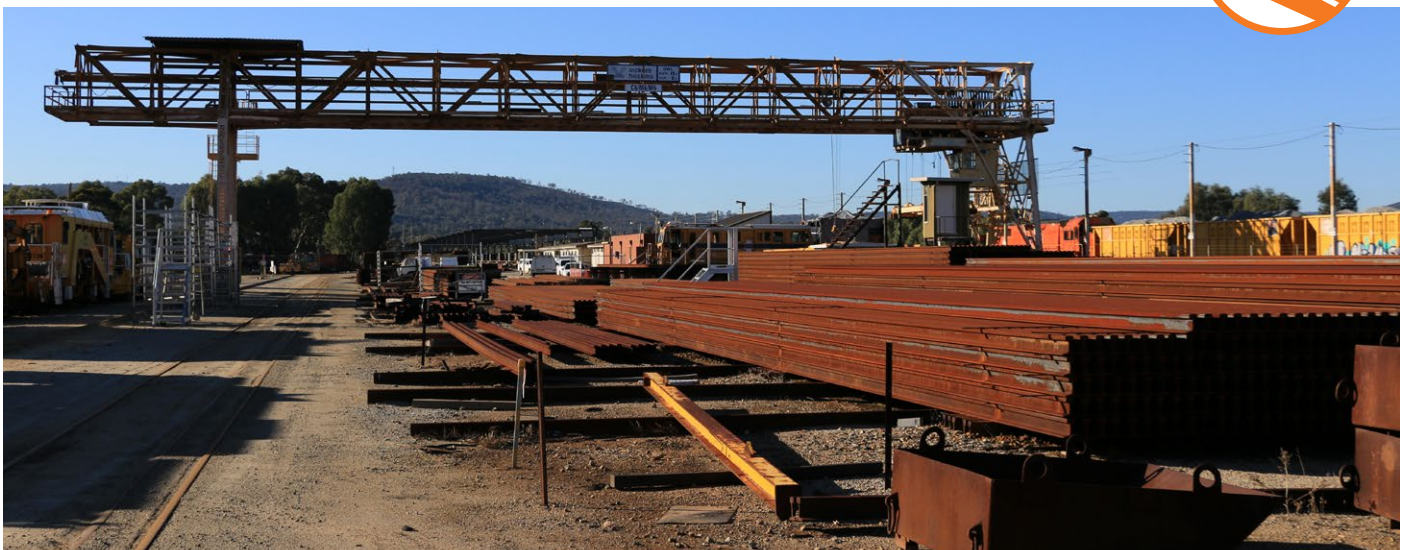
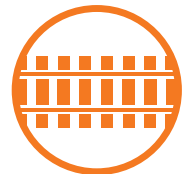
The Public Transport Authority (PTA) is addressing the State's future rail needs by building a rail freight facility at Kenwick, adjoining the Midland to Kwinana/Fremantle railway freight line.

What is the Kenwick Rail Freight Facility?

The facility, to be built and owned by the PTA as part of the existing rail freight lease, will include:

- A flashbutt rail welding area
- Ballast loading tracks and stockpiles
- Rail stowage track for rail grinding and track machines
- A rail-handling area
- Administration, training and material storage facilities
- Connection to the existing rail freight network

The facility operations will be the responsibility of the rail freight network operator, with PTA acting as the landowner on behalf of the State Government.



What has been happening?

Recently the PTA has completed a series of geotechnical, ethnographic, and heritage surveys of the site, to support the construction Development Applications. In coming months, some of these will continue in more detail, along with additional survey work.

There are a number of major underground utilities that run alongside or across the site, which will require protection and/or relocation before main works can begin. A tender for a specialist contractor to complete this early work has been released, with award planned in early 2017.

The PTA continues the land acquisition process with impacted land owners. In October a Planning Control Area came into place over the affected land, which was gazetted at the same time as the industrial rezoning, as part of the Maddington Kenwick Strategic Employment Area (MKSEA) plan.

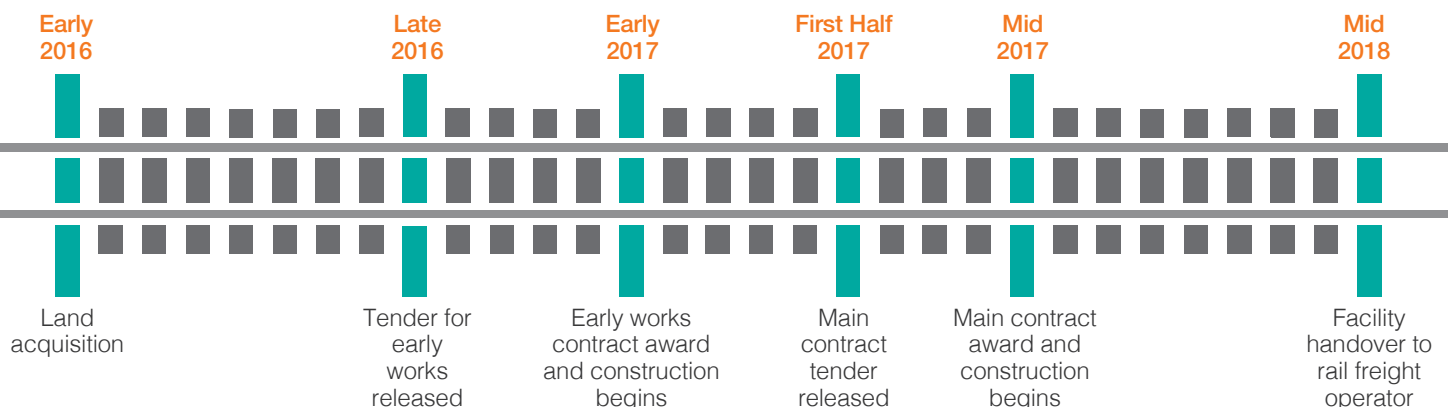


What works are planned for 2017?

Following the contract award, early protection works will begin in 2017 and be completed by mid-2017.

The main design and construct contract is planned to be released for tender in the first half of 2017 and awarded in mid-2017. Main construction activity on the site will begin shortly after that, with completion targeted by mid-2018.

TIMELINE



Construction

More details on the facility's construction methods will be provided closer to when works begin.

The PTA will work with its contractors to ensure minimal impact from construction activity, with most works taking place during normal construction hours (7am - 7pm Monday to Saturday). If out-of-hours work is required, residents will be notified in advance and all work will follow approved noise and environmental management plans, which are currently in development.